

---

## APPENDIX B

# BIOLOGICAL RESOURCES ASSESSMENT

# **BIOLOGICAL RESOURCES ASSESSMENT**

**SAN ANTONIO WATER COMPANY HEADQUARTERS  
UPLAND, SAN BERNARDINO COUNTY, CALIFORNIA  
(APN 1044-091-22)**

**LSA**

September 2024

# **BIOLOGICAL RESOURCES ASSESSMENT**

**SAN ANTONIO WATER COMPANY HEADQUARTERS  
UPLAND, SAN BERNARDINO COUNTY, CALIFORNIA  
(APN 1044-091-22)**

Submitted to:

Brian C. Lee, General Manager  
San Antonio Water Company  
139 North Euclid Avenue  
Upland, California 91786

Prepared by:

LSA Associates, Inc.  
1500 Iowa Avenue, Suite 200  
Riverside, California 92507  
(951) 781-9310

Project No. 20241723



September 2024

## TABLE OF CONTENTS

TABLE OF CONTENTS .....	i
LIST OF ABBREVIATIONS AND ACRONYMS .....	ii
<b>INTRODUCTION .....</b>	<b>1</b>
Site Description .....	1
<b>METHODS .....</b>	<b>2</b>
Literature Review .....	2
Reconnaissance Field Survey .....	3
<b>RESULTS .....</b>	<b>4</b>
Existing Site Conditions .....	4
Topography and Soils .....	4
Vegetation and Land Cover .....	4
Wetlands and Other Jurisdictional Waters .....	5
Wildlife .....	6
Special-Status Species .....	6
<b>IMPACT FINDINGS .....</b>	<b>22</b>
Vegetation and Habitat Impacts .....	22
Threatened and Endangered Species .....	22
Non-Listed Special-Status Species .....	22
Nesting Birds .....	23
Wildlife Movement, Corridors, and Nursery Sites .....	24
Local Tree Ordinance .....	24
<b>REFERENCES .....</b>	<b>25</b>
<b>TABLES</b>	
Table A: Mapped Soils Classification .....	4
Table B: Mapped Vegetation/Land Cover Classifications .....	5
Table C: Special-Status Species Occurrence Probability .....	7

## APPENDICES

- A: FIGURES 1–5
- B: VASCULAR PLANT SPECIES OBSERVED

## LIST OF ABBREVIATIONS AND ACRONYMS

APN	Assessor's Parcel Number
BRA	Biological Resources Assessment
CDFW	California Department of Fish and Wildlife
CEQA	California Environmental Quality Act
CESA	California Endangered Species Act
City	City of Upland
CNDDDB	California Natural Diversity Database
CNPS	California Native Plant Society
CWA	Clean Water Act
IPaC	Information for Planning and Consultation
NRCS	Natural Resources Conservation Service
Project	San Antonio Water Company Headquarters Project
RWQCB	Regional Water Quality Control Board
SAWCO	San Antonio Water Company
USACE	United States Army Corps of Engineers
USFWS	United States Fish and Wildlife Service
USGS	United States Geological Survey

---

## INTRODUCTION

The following Biological Resources Assessment (BRA) technical report prepared by LSA & Associates, and in accordance with the California Environmental Quality Act (CEQA), includes a description of the biological resources present or with the potential to occur within the proposed San Antonio Water Company (SAWCO) Headquarters Project (Project) and surrounding areas, and analyzes potential Project-related impacts to protected species and associated habitats.

### SITE DESCRIPTION

The Project is located at 400 East 20th Street, on Assessor's Parcel Numbers (APN) 1044-091-22-0000 in Upland, San Bernardino County, California (Figure 1; all figures are provided in Appendix A). The Project would result in the construction of a new 3,698 square-foot SAWCO headquarters and associated improvements including a 4,066 square-foot maintenance building, maintenance yard, driveway, parking, solar cover, citrus grove, and ornamental landscaping on approximately 4.92 acres of SAWCO property (refer to Figure 2).

The Project site is located in northwest Upland in an area primarily consisting of residential, commercial, and industrial uses. The Project site is bound by East 20th Street to the north, undeveloped open space to the east, State Route 210 (SR-210) to the south, and Flower Court to the west.

## METHODS

### LITERATURE REVIEW

A literature review and record search were conducted in July 2024 to identify the existence and potential for occurrence of sensitive or special-status plant and animal species in the Project vicinity. A thorough search of the databases for published accounts of special-status plant and animal species was conducted for the *Mount Baldy* 7.5-minute quadrangle that contains the Project, and for the three surrounding quadrangles: *Cucamonga Peak*, *Guasti*, and *Ontario*. Federal and State lists of sensitive species were also examined. Current electronic database records reviewed included the following:

- **California Natural Diversity Database information (CNDDDB – RareFind 5)** (California Department of Fish and Wildlife [CDFW] 2024), which is administered by the CDFW, formerly known as the California Department of Fish and Game. This database covers sensitive plant and animal species, as well as sensitive natural communities that occur in California.
- **California Native Plant Society’s (CNPS) Electronic Inventory of Rare and Endangered Vascular Plants** (CNPS 2024), which uses four specific categories or “lists” of sensitive plant species to assist with the conservation of rare or endangered botanical resources. All of the plants constituting California Rare Plant Ranks 1A, 1B, 2A, and 2B are intended to meet the status definitions of “threatened” or “endangered” in the California Endangered Species Act (CESA) and the California Fish and Game Code and are considered by CNPS to be eligible for State listing. At the discretion of the CEQA Lead Agency, impacts to these species may be analyzed as such, pursuant to *State CEQA Guidelines* Sections 15125(c) and 15380. Plants in Rank 3 (limited information; review list), Rank 4 (limited distribution; watch list), or that are considered Locally Unusual and Significant may be analyzed under CEQA if there is sufficient information to assess potential significant impacts.
- **United States Fish and Wildlife Service’s (USFWS) Information for Planning and Consultation (IPaC) Online System** (USFWS 2024a), which lists all proposed, candidate, threatened, and endangered species managed by the USFWS Endangered Species Program that have the potential to occur on or near a particular site. This database also lists all known critical habitats, national wildlife refuges, and migratory birds that could potentially be impacted by activities from a proposed project. An IPaC resource report was generated for the Project.

In addition to the databases listed above, historic and current aerial imagery, existing environmental reports for developments in the Project vicinity, and regional habitat conservation plans, and local land use policies related to biological resources were reviewed. Wetland resources including riparian corridors were determined using the USFWS Wetlands Mapper online edition (USFWS 2024d). Soil types were determined using the United States Department of Agriculture Natural Resources Conservation Service (NRCS) WebSoil Survey (NRCS 2024).

---

## RECONNAISSANCE FIELD SURVEY

LSA Biologist Chrissy Kent conducted a general reconnaissance-level, pedestrian field survey on July 19, 2024, from 7:40 a.m. to 9:00 a.m. Weather conditions during the survey consisted of clear, sunny skies, with a temperature ranging from 76 to 81 degrees Fahrenheit and a light breeze of 2 to 5 miles per hour. All areas within the approximate 4.92-acre Project site were surveyed on foot, using binoculars to assist in identifying species present. Observations on general site conditions, vegetation, and habitat suitability for various special-status elements were recorded, and a list of observed and detected plant and animal species is provided in Appendix B.

## RESULTS

### EXISTING SITE CONDITIONS

The parcel is composed of existing developments including an underground one-million-gallon water storage tank located at the northwestern corner, a pump station located at the southwestern corner, and a signal building and tower located at the southeastern corner. Approximately five SAWCO employees within the Operations Department use the Project site on a daily basis for equipment and material storage. The existing water storage tank, pump station, and signal buildings and tower would remain in place.

The site is bordered by developed areas to the north, west, and south. Residential communities surround the north and west sides, while the south side features a developed roadway—Route 210, Foothill freeway. Directly adjacent to the Project site to the east is an undeveloped open space owned by Southern California Edison Company; this vacant lot connects to East 20th Street and is next to Holliday Rock, a ready-mix concrete supplier. The site itself primarily consists of nonnative, disturbed vegetation. The following sections discuss topography and soils, vegetation, and wildlife within the Project site.

#### Topography and Soils

The topography of the Project site is relatively level, with a slope of 3.9 percent and elevations ranging from 1,634 to 1,659 feet above mean sea level.

Three soil types were mapped on the Project site: Soboba stony loamy with 2 to 9 percent slopes, Soboba gravelly loamy sand with 0 to 9 percent slopes, and Hanford coarse sandy loam with 2 to 9 percent slopes (see Table A and Figure 3). These soils are not classified as hydric and have a drainage class of excessively drained and well drained (NRCS 2024). The existing soils across the Project site are highly compacted, which is indicative of long-term disturbance and consistent with the current site conditions.

**Table A: Mapped Soils Classification**

Soil	Drainage Class	Frequency of Flooding	Frequency of Ponding	Hydric Soil Rating
Soboba stony loamy, 2 to 0 percent slopes	Excessively Drained	Rare	None	No
Soboba gravelly loamy sand, 0 to 9 percent slopes	Excessively Drained	Rare	None	No
Hanford coarse sandy loam, 2 to 9 percent slopes	Well Drained	Rare	None	No

Source: United States Department of Agriculture (2024) <https://websoilsurvey.nrcs.usda.gov/app/WebSoilSurvey.aspx> (July 2024).

#### Vegetation and Land Cover

The Project site is almost entirely disturbed and exhibits minimal cover by native species. However, there is a small portion of the site that is composed of native scale broom (*Lepidospartum squamatum*). Figure 4 shows a map of vegetation and land cover types existing on the Project site,

and Figure 5 provides representative photographs. The approximate acreages of each vegetation/land cover category occurring on site are shown in Table B, below.

**Table B: Mapped Vegetation/Land Cover Classifications**

Vegetation/Land Cover	Project Acreage
Developed	0.64
Disturbed	4.33
Scale broom scrub	0.18
<b>Total</b>	<b>5.12</b>

Source: Compilation from field surveys LSA conducted on July 19, 2024.

A total of nine vascular plant species were identified within the Project site during the field survey. A majority of these plant species represent non-native taxa. See Appendix B for a full list of plant species identified.

Areas mapped as disturbed land cover make up approximately 4.33 acres of the Project site and is dominated by the following nonnative plant species: erodium (*Erodium cicutarium*), flax-leaved horseweed (*Erigeron bonariensis*), and red brome (*Bromus rubens*).

Native land cover is entirely composed of scale broom scrub and approximately 0.18 acre would potentially be impacted by the Project.

**Wetlands and Other Jurisdictional Waters**

The United States Army Corps of Engineers (USACE), under Section 404 of the federal Clean Water Act (CWA), regulates discharges of dredged or fill material into “waters of the United States.” These waters include wetlands and non-wetland bodies of water that meet specific criteria, including a connection to interstate commerce. This connection may be direct (through a tributary system linking a stream channel with traditional navigable waters used in interstate or foreign commerce) or it may be indirect (through a connection identified in USACE regulations). The USACE typically regulates as non-wetland waters of the United States any body of water displaying an “ordinary high-water mark.” To be considered a “jurisdictional wetland” under Section 404, an area must possess hydrophytic vegetation, hydric soils, and wetland hydrology. The CDFW, under Sections 1600 et seq. of the California Fish and Game Code, regulates alterations to lakes, rivers, and streams. A stream is defined by the presence of a channel bed and banks and at least an occasional flow of water. The Regional Water Quality Control Board (RWQCB) is responsible for the administration of Section 401 of the CWA through water quality certification of any activity that may result in a discharge to jurisdictional waters of the United States. The RWQCB may also regulate discharges to “waters of the State,” including wetlands, under the California Porter-Cologne Water Quality Control Act.

No drainage features, ponded areas, wetlands, or riparian habitat subject to jurisdiction of CDFW, USACE, and/or RWQCB were found within the Project site.

## Wildlife

The disturbed vegetation occurring within the Project site is considered low-quality habitat for most native wildlife species. There are trees adjacent to the Project site and native vegetation that could contribute to nesting but would not be significantly impacted by the proposed development. A total of six wildlife species were observed in (or foraging over) the Project site during the field survey: mourning Dove (*Zenaida macroura*), lesser goldfinch (*Spinus psaltria*), northern mockingbird (*Mimus polyglottos*), Anna's hummingbird (*Calypte anna*), and western fence lizard (*Sceloporus occidentalis*). Each of these species commonly occur in and around developed areas throughout Southern California.

No federally listed, State-listed, or other special-status species or signs were observed during the field survey. The Project site lacks habitat that would attract special-status wildlife species. Based on field observations and a block security wall, there is no evidence that the site functions as a wildlife movement corridor or an important stopover point for migratory species.

## Special-Status Species

No special-status plant or wildlife species were observed during the field survey, but there are three known occurrence records of special-status species within 0.5 mile of the Project. Table C, below, identifies those special-status plant and animal species with CNDDDB occurrence record search, and includes detailed information about each species' habitat and distribution, as well as State and federal status designations and the probability of occurrence within the Project disturbance limits. It should be noted that the literature review and record search covered a large, geographically diverse area containing numerous habitat types not found within or around the Project.

None of the species identified in the literature review are expected to occur on the Project site due to historic and ongoing anthropogenic disturbances and the lack of suitable habitats for these species.

**Table C: Special-Status Species Occurrence Probability**

Species	Status	Habitat and Distribution	Activity Period	Occurrence Probability
<b>Plants</b>				
<i>Aphyllon validum</i> ssp. <i>validum</i> <b>Rock Creek broomrape</b>	US: – CA: –	Chaparral and pinyon and juniper woodlands, particularly in granitic soils between 1030 and 2,000 meters in elevation (3,380 to 6,560 feet). Found in Los Angeles, San Bernadino, and Ventura Counties.	Blooms May through September (Parasitic perennial herb)	<b>Absent:</b> Project site lacks suitable habitat (chaparral, pinyon, or juniper woodlands). Elevation and soil parameters for this species are not present.
<i>Arctostaphylos glandulosa</i> ssp. <i>gabierlensis</i> <b>San Gabriel manzanita</b>	US: – CA: –	Evergreen shrub. Rocky areas in chaparral from 595 to 1,500 meters (1,950 to 5,000 feet) elevation. Known only from Los Angeles, Santa Barbara, and San Bernardino Counties, California.	Blooms March	<b>Absent:</b> Project site lacks suitable habitat (evergreen shrubs, or rocky areas in chaparral).
<i>Berberis nevinii</i> <b>Nevin’s barberry</b>	US: FE CA: CE	Perennial stem succulent that inhabits gravelly wash margins in alluvial scrub or coarse soils and rocky slopes in chaparral at 70 to 825 meters (220 to 2,700 feet) in elevation. Known occurrences at higher elevations are planted (not natural). Known only from Los Angeles, San Bernardino, Riverside, and San Diego counties, California.	Blooms May through June	<b>Absent:</b> Project site lacks suitable habitat (gravelly wash margins in alluvial scrub or coarse soils and rocky slopes in chaparral). Conspicuous perennial species not present.
<i>Calochortus clavatus</i> var. <i>gracilis</i> <b>Slender mariposa-lily</b>	US: - CA: -	Chaparral, coastal scrub, and grassland at in the Transverse Ranges at 320 to 1,000 meters (1,050 to 3,300 feet) elevation. Known only from the western transverse ranges and San Gabriel Mountains of Los Angeles and Ventura Counties, California.	Blooms March through June (November)	<b>Absent:</b> Outside known range of species and no suitable habitat (chaparral, coastal scrub, or grassland in transverse ranges) on site.
<i>Calochortus weedii</i> var. <i>intermedius</i> <b>Intermediate mariposa-lily</b>	US: – CA: –	Dry, open rocky slopes and rock outcrops in chaparral, coastal sage scrub, and grassland, at 105 to 855 meters (340 to 2,800 feet) elevation. Known only from Los Angeles, Orange, Riverside, and San Bernardino Counties, California. In the western Riverside County area, this species is known from the hills and valleys west of Lake Skinner and Vail Lake ( <i>The Vascular Plants of Western Riverside County, California</i> . F.M. Roberts et al., 2004). Appears to intergrade with <i>Calochortus plummerae</i> , which is mostly east and north of Santa Ana Mountains.	Blooms May through July (perennial herb)	<b>Absent:</b> Project site lacks dry, open rocky slopes and rock outcrops. No observations were made of <i>Calochortus plummerae</i> , which this species likes to intergrade with. The nearest recorded observation was approximately 3.4 miles away in 2020.

**Table C: Special-Status Species Occurrence Probability**

Species	Status	Habitat and Distribution	Activity Period	Occurrence Probability
<i>Calystegia felix</i> <b>Lucky morning glory</b>	US: – CA: –	Annual or perennial rhizomatous herb. Wetland and marshy areas, sometimes alkaline, sometimes artificially watered, from 30 to 215 meters (100 to 700 feet) elevation. All of the known extant occurrences are associated with well-watered landscaping on recently completed industrial, commercial, and residential developments in the City of Chino within a historical area of artesian springs. Older collections are from areas that are now heavily urbanized areas (including one from South Los Angeles and another from Pico Rivera in Los Angeles County). Known to occur only in western San Bernardino County. Presumed extirpated from Riverside and Los Angeles Counties.	Blooms March through September	<b>Absent:</b> Project site is not within known elevation and lacks favorable annual or perennial rhizomatous herbs within the artificially watered area at the front entrance. No wetland and marshy areas, or alkaline soils present.
<i>Chorizanthe parryi</i> var. <i>parryi</i> <b>Parry's spineflower</b>	US: – CA: –	Sandy or rocky soils in chaparral, coastal scrub, oak woodlands, and grassland at 40 to 1,705 meters (100 to 5,600 feet) elevation. Known only from Los Angeles, Riverside, and San Bernardino Counties.	Blooms April through June (annual herb)	<b>Absent:</b> Project site lacks suitable habitat (sandy or rocky soils in chaparral, coastal scrub, oak woodlands, and grassland).
<i>Cladium californicum</i> <b>California saw-grass</b>	US: – CA: –	Marshes and seeps below 600 meters (2,000 feet) elevation. In California, known from Inyo, Riverside, Santa Barbara, San Bernardino and San Luis Obispo Counties. Believed to be extirpated from Los Angeles and perhaps San Bernardino Counties. Also occurs in Arizona, New Mexico, Nevada, Texas Utah, and Mexico.	Blooms June through September (perennial rhizomatous bulb)	<b>Absent:</b> Project site lacks suitable habitat. No marshes or seeps present.
<i>Dodecahema leptoceras</i> <b>Slender-horned spineflower</b>	US: FE CA: CE	In the Vail Lake area, occurs in gravel soils of Temecula arkose deposits in openings in chamise chaparral. In other areas, occurs in sandy cobbly riverbed alluvium in alluvial fan sage scrub (usually late seral stage), on floodplain terraces and benches that receive infrequent overbank deposits from generally large washes or rivers, where it is most often found in shallow silty depressions dominated by leather spineflower	Blooms April through June (annual herb)	<b>Absent:</b> Project site lacks suitable soils and is not within range of receiving infrequent overbank deposits from generally large washes or rivers. No water sources or cryptogamic soil crusts were observed.

**Table C: Special-Status Species Occurrence Probability**

Species	Status	Habitat and Distribution	Activity Period	Occurrence Probability
		<i>(Lastarriaea coriacea)</i> and other native annual species, and is often associated with cryptogamic soil crusts composed of bryophytes, algae and/or lichens. Occurs at 200 to 760 meters (600 to 2,500 feet) elevation. Known only from Los Angeles, Riverside, and San Bernardino Counties, California.		
<i>Dudleya multicaulis</i> <b>Many-stemmed dudleya</b>	US: – CA: – CRPR: 1B.2	Heavy, often clay soils or around granitic outcrops in chaparral, coastal sage scrub, and grassland below 790 meters (2,600 feet) elevation. Known only from Los Angeles, Orange, Riverside, San Bernardino, and San Diego Counties.	Blooms April through July (perennial herb)	<b>Absent:</b> Project site lacks clay soils, chaparral, coastal sage scrub, and grassland habitat.
<i>Eriogonum microthecum</i> var. <i>johnstonii</i> <b>Johnston’s buckwheat</b>	US: – CA: – CRPR: 1B.3	Upper montane and subalpine coniferous forest of the San Gabriel Mountains; 1,800 to 2,900 meters (5,900 to 9,500 feet) elevation.	Blooms June through October (perennial deciduous shrub)	<b>Absent:</b> Project site is not located within the subalpine or upper montane coniferous forest.
<i>Horkelia cuneata</i> var. <i>puberula</i> <b>Mesa horkelia</b>	US: – CA: – CRPR: 1B.1	Sandy or gravelly soils in chaparral, or rarely in cismontane woodland or coastal scrub at 70 to 825 meters (200 to 2,700 feet) elevation. Known only from San Luis Obispo, Santa Barbara, Ventura, Los Angeles, Orange, and San Bernardino Counties, California. Believed extirpated from Riverside and San Diego Counties.	Blooms February through July (sometimes to September) (perennial herb)	<b>Absent:</b> Project site does not contain any sandy or gravelly soils and lacks cismontane woodland and coastal scrub.
<i>Lilium parryi</i> <b>Lemon lily</b>	US: – CA: – CRPR: 1B.2	Bulbiferous perennial herb of wet areas in meadows and riparian and montane coniferous forests at 1,220 to 2,790 meters (4,000 to 9,200 feet) elevation. In California, known from Los Angeles, Riverside, San Bernardino, and San Diego Counties. Also occurs in Arizona and Mexico.	Blooms July through August (perennial herb)	<b>Absent:</b> No meadows, riparian, or montane coniferous forest habitats within the Project site.
<i>Linanthus concinnus</i> <b>San Gabriel linanthus</b>	US: – CA: – CRPR: 1B.2	Dry rocky slopes in lower and upper montane coniferous forest at 1,520 to 2,800 meters (5,000 to 9,200 feet) elevation; known only from Los Angeles and San Bernardino Counties.	Blooms April through July (annual herb)	<b>Absent:</b> No suitable habitat within the Project site (dry rocky slopes in lower and upper montane coniferous forest).

**Table C: Special-Status Species Occurrence Probability**

Species	Status	Habitat and Distribution	Activity Period	Occurrence Probability
<i>Monardella austalis</i> ssp. <i>jokerstii</i> <b>Jokerst's monardella</b>	US: – CA: – CRPR: 1B.1	Steep scree or talus slopes between breccia and secondary alluvial benches along drainages and washes, in lower montane coniferous forest and chaparral at 1,350 to 1,750 meters (4,430 to 5,740 feet). Known only from the San Gabriel Mountains of San Bernardino County, California.	Blooms July through September (perennial rhizomatous herb)	<b>Absent:</b> No suitable habitat within the Project site (steep scree or talus slopes between breccia and secondary alluvial benches along drainages and washes, in lower montane coniferous forest and chaparral).
<i>Monardella breweri</i> ssp. <i>glandulifera</i> <b>Brown's flat monardella</b>	US: – CA: – CRPR: 1B.2	Chaparral and lower montane coniferous forests, particularly in dry, grassy openings and ridgetops between elevations of 1,300 and 1,500 meters. Found in Los Angeles County.	Blooms May through August (Annual herb)	<b>Absent:</b> No suitable habitat within the Project site (chaparral and lower montane coniferous forests, particularly in dry, grassy openings and ridgetops).
<i>Monardella macrantha</i> ssp. <i>hallii</i> <b>Hall's monardella</b>	US: – CA: – CRPR: 1B.3	Dry slopes and ridges in openings in chaparral, woodland, and forest at 695 to 2,195 meters (2,280 to 7,200 feet) elevation. Known only from Los Angeles, San Diego, Orange, Riverside, and San Bernardino Counties, California. In the western Riverside County area, known only from higher elevations in the Santa Ana and Agua Tibia Mountains ( <i>The Vascular Plants of Western Riverside County, California</i> . F.M. Roberts et al., 2004).	Blooms June through August (sometimes to October) (perennial herb)	<b>Absent:</b> No suitable habitat within the Project site (dry slopes and ridges in openings in chaparral, woodland, and forest).
<i>Muhlenbergia utilis</i> <b>Aparejo grass</b>	US: – CA: – CRPR: 2B.2	Wet sites along streams and ponds within meadows, coastal sage scrub, chaparral, and cismontane woodland below 2,325 meters (7,628 feet) elevation. In California, known from Inyo, Kern, Monterey, San Bernardino, San Luis Obispo, Santa Barbara, and Ventura Counties. Also occurs in Arizona, Nevada, New Mexico, and Mexico.	Blooms March through October (perennial herb)	<b>Absent:</b> No streams or ponds with meadows, coastal sage scrub, chaparral, and cismontane woodland are on site to provide suitable habitat.
<i>Navarretia prostrata</i> <b>Prostrate vernal pool navarretia</b>	US: – CA: – CRPR: 1B.2	Vernal pools, usually alkaline, from 15 to 1,210 meters (50 to 4,000 feet) elevation. Known only from Alameda, Fresno, Los Angeles, Merced, Monterey, Orange, Riverside, San Benito, San Diego, and San Luis Obispo Counties. Presumed extirpated from San Bernardino County.	Blooms April through July (annual herb)	<b>Absent:</b> No vernal pools present on Project site.

**Table C: Special-Status Species Occurrence Probability**

Species	Status	Habitat and Distribution	Activity Period	Occurrence Probability
<i>Oreinana vestita</i> <b>Woolly mountain-parsley</b>	US: – CA: – CRPR: 1B.3	Scree, talus, or gravel on high ridges in subalpine coniferous forest and upper montane coniferous forest at 1,615 to 3,500 meters (5,300 to 11,500 feet) elevation. Known only from Kern, Los Angeles, and San Bernardino Counties, California.	Blooms May through September (perennial herb)	<b>Absent:</b> No suitable habitat within the Project site (scree, talus, or gravel on high ridges in subalpine coniferous forest and upper montane coniferous forest).
<i>Phacelia stellaris</i> <b>Brand’s star phacelia</b>	US: – CA: – CRPR: 1B.1	Dunes and sandy openings in coastal scrub communities at 5 to 400 meters (20 to 1,300 feet) elevation. In western Riverside County, this species appears to be restricted to sandy washes and benches in alluvial floodplains. Known only from Los Angeles (believed extirpated), Riverside and San Diego Counties, California. The most recent record of this species from Los Angeles County was in 1943.	Blooms March through June (annual herb)	<b>Absent:</b> No dunes or sandy areas on site. Project is also not within a sandy wash or bench.
<i>Pseudognaphalium leucocephalum</i> <b>White rabbit-tobacco</b>	US: – CA: – CRPR: 2B.2	Sand and gravel at the edges of washes or mouths of steep canyons at 0 to 2,100 meters (0 to 7,000 feet) elevation. In California, known from Los Angeles, Orange, Riverside, Santa Barbara, San Diego, San Luis Obispo, and Ventura Counties. Also occurs in Arizona, New Mexico, Texas, and Mexico.	Blooms usually August through November (perennial herb)	<b>Absent:</b> Site is not within the edge of a wash or mouth of a steep canyon. No sandy or gravelly soils present.
<i>Sagittaria sanfordii</i> <b>Sanford’s arrowhead</b>	US: – CA: – CRPR: 1B.2	Marshes and swamps below 650 meters (2,100 feet) elevation. Occurs in standing or slow-moving fresh water (ponds, marshes, and ditches). Known only from Butte, Del Norte, El Dorado, Fresno, Merced, Mariposa, Placer, Sacramento, Shasta, San Joaquin, and Tehama Counties. Believed extirpated from Southern California.	Blooms May through October (perennial emergent herb)	<b>Absent:</b> No marshes or swamps occur at this Project site.
<i>Sidalcea neomexicana</i> <b>Salt Spring checkerbloom</b>	US: – CA: – CRPR: 2B.2	Alkaline springs and brackish marshes below 1,530 meters (5,000 feet) elevation. In California, known only from Kern, Orange, Riverside, San Bernardino, San Diego, and Ventura Counties. Believed extirpated from Los Angeles County. Also known from Arizona, New Mexico, Nevada, Utah, and Mexico.	Blooms March through June (perennial herb)	<b>Absent:</b> No alkaline or brackish habitats present on Project site.

**Table C: Special-Status Species Occurrence Probability**

Species	Status	Habitat and Distribution	Activity Period	Occurrence Probability
<i>Symphyotrichum defoliatum</i> <b>San Bernardino aster</b>	US: – CA: – CRPR: 1B.2	Vernally wet sites (such as ditches, streams, and springs) in many plant communities below 2,040 meters (6,700 feet) elevation. In California, known from Ventura, Kern, San Bernardino, Los Angeles, Orange, Riverside, and San Diego Counties. May also occur in San Luis Obispo County. In the western Riverside County area, this species is scarce, and documented only from Temescal and San Timoteo Canyons ( <i>The Vascular Plants of Western Riverside County, California</i> . F.M. Roberts et al., 2004).	Blooms July through November (perennial herb)	<b>Absent:</b> No vernal wet areas are present on Project site.
<i>Symphyotrichum greatae</i> <b>Greata's aster</b>	US: – CA: – CRPR: 1B.3	Mesic places in canyons in chaparral and woodland habitats at 300 to 2,010 meters (1,000 to 6,600 feet) elevation. Known only from Los Angeles, San Bernardino, and Ventura Counties.	Blooms June through October (perennial herb)	<b>Absent:</b> No chaparral or woodland habitat present on Project site.
<i>Thysanocarpus rigidus</i> <b>Rigid fringepod</b>	US: – CA: – CRPR: 1B.2	Dry rocky slopes, in oak, pine, or juniper woodland at 600 to 2,200 meters (2,000 to 7,200 feet) elevation. In California, known from Los Angeles, Riverside, San Bernardino, and San Diego Counties. Also occurs in Mexico.	Blooms February through May (annual herb)	<b>Absent:</b> No suitable habitat within the Project site (dry rocky slopes, in oak, pine, or juniper woodland).
<i>Viola pinetorum</i> ssp. <i>grisea</i> <b>Grey-leaved violet</b>	US: – CA: – CRPR: 1B.2	Dry mountain peaks and slopes in meadows and upper montane and subalpine coniferous forest at 1,500 to 3,400 meters (5,000 to 11,000 feet) elevation. Known only from Fresno, Inyo, Kern, Los Angeles, Madera, San Bernardino, Tulare, and Ventura Counties, California.	Blooms April through July (perennial herb)	<b>Absent:</b> No suitable habitat within the Project site (dry mountain peaks and slopes in meadows and upper montane and subalpine coniferous forest).
<b>Invertebrates</b>				
<i>Bombus crotchii</i> <b>Crotch bumble bee</b>	US: – CA: SCE	Inhabits open scrub (including chaparral) and grassland from coastal California to crest of Sierra-Cascade and in desert edge areas, south into Mexico. Primarily nests underground. Suitable bumble bee habitat requires the continuous availability of flowers on which to forage throughout the duration of the colony (spring through fall), colony nest sites, and overwintering sites for the queens.	Spring and summer	<b>Absent:</b> Project site lacks scrub habitat. Site consists of minimal, non-native grassland that is often disturbed resulting in the destruction or removal of vegetation as seen in ariels throughout the years. Therefore, no suitable flower availability is present to support a colony.

**Table C: Special-Status Species Occurrence Probability**

Species	Status	Habitat and Distribution	Activity Period	Occurrence Probability
<i>Bombus pensylvanicus</i> <b>American bumble bee</b>	US: – CA: –	Inhabits open farmland and fields throughout the U.S. Also occurs in Canada and Mexico. Primarily nests at the ground surface in tall grass, but occasionally underground. Suitable bumble bee habitat requires the continuous availability of flowers on which to forage throughout the duration of the colony (spring through fall), colony nest sites, and overwintering sites for the queens.	Spring and Summer	<b>Absent:</b> Project site is not composed of open farmland or fields and lacks flower availability to support a colony. Site is often disturbed which does not allow the growth of tall grass that is needed for nesting.
<i>Callophrys mossii hidakupa</i> <b>San Gabriel Mountains elfin butterfly</b>	US: – CA: –	Inhabit rocky outcrops, woody canyons and cliffs. Larvae host plants for this species include <i>Dudleya</i> sp.	April through June	<b>Absent:</b> Project site lacks suitable habitat (rocky outcrops, woody canyons or cliffs). Larvae host plant <i>Dudleya</i> sp. not observed on site.
<i>Gonidea angulata</i> <b>Western ridges mussel</b>	US: – CA: –	Commonly found in stream and lakes. Prefer a constant waterflow and well-oxygenates stable substrates. Not commonly found in continuously turbid waters.	Spring and Summer	<b>Absent:</b> No water features are within the Project site.
<i>Neolarra alba</i> <b>White cuckoo bee</b>	US: – CA: –	Kleptoparasite that occurs in Southern California.	N/A	<b>Low:</b> Little is known about the habitat needs of this species. The Project site is within the range for this species. However, due to lack of vegetation on this site, the species is not expected to be present. There are no known records of occurrence within 5 miles of the Project.
<i>Rhaphiomidas terminatus abdominalis</i> <b>Delhi Sands flower-loving fly</b>	US: FE CA: SA	Restricted to Delhi series sands in western Riverside and San Bernardino Counties.	Above ground emergence August and September. Not visible during the rest of the year.	<b>Absent:</b> No Delhi series sands on Project site.

**Table C: Special-Status Species Occurrence Probability**

Species	Status	Habitat and Distribution	Activity Period	Occurrence Probability
<b>Fish</b>				
<i>Catostomus santaanae</i> <b>Santa Ana sucker</b>	US: FT CA: SSC	The Santa Ana sucker’s historical range includes the Los Angeles, San Gabriel, and Santa Ana River drainage systems located in Southern California. An introduced population also occurs in the Santa Clara River drainage system in southern California. Found in shallow, cool, running water.	Year-round	<b>Absent:</b> Project site does not contain any water features.
<i>Gila orcutti</i> <b>Arroyo chub</b>	US: – CA: SSC	Perennial streams or intermittent streams with permanent pools; slow water sections of streams with mud or sand substrates; spawning occurs in pools. Native to Los Angeles, San Gabriel, San Luis Rey, Santa Ana, and Santa Margarita River systems; introduced in Santa Ynez, Santa Maria, Cuyama, and Mojave River systems and smaller coastal streams.	Year-round	<b>Absent:</b> Project site does not contain any water features.
<b>Amphibians</b>				
<i>Anaxyrus (Bufo) californicus</i> <b>Arroyo toad</b>	US: FE CA: SSC	Washes and arroyos with open water; sand or gravel beds; for breeding, pools with sparse overstory vegetation. Coastal and a few desert streams from Santa Barbara County to Baja California.	March through July	<b>Absent:</b> Project site lacks suitable habitat (washes or arroyos with open water; sand or gravel beds). Site does not contain any open water or water sources.
<i>Batrachoseps gabrieli</i> <b>San Gabreil slender salamander</b>	US: – CA: –	Found under rocks, wood, fern fronds and on soil at the base of talus slopes. This salamander is most active on the surface in winter and early spring. Known only from the San Gabriel Mountains.	Winter through early spring	<b>Absent:</b> Project site lacks suitable habitat (rocks, wood, fern fronds, or soil at the base of talus slopes).
<i>Rana boylei</i> <b>Foothill yellow-legged frog</b>	US: FE/FT CA: SE/ST/SSC	Partly-shaded, shallow streams and riffles with a rocky (at least some cobble-sized) substrate for egg-laying, and with water for at least 15 weeks until metamorphosis. Historically occurred in much of northern and central California, south along the western foothills of the Sierra Nevada to the edge of the Tehachapi Mountains, and south along the coast ranges to the San Gabriel Mountains (south to the San Gabriel River) in Los Angeles County.	Unknown	<b>Absent:</b> No suitable habitat is present on Project site. Outside the known range of this species and the site does not contain any water features.

**Table C: Special-Status Species Occurrence Probability**

Species	Status	Habitat and Distribution	Activity Period	Occurrence Probability
<i>Rana mucosa</i> <b>Southern mountain yellow-legged frog</b>	US: FE CA: CE	Ponds, lakes, and streams at moderate to high elevation; appears to prefer bodies of water with open margins and gently sloping bottom. Transverse Ranges in southern California from 370 to 2,290 meters (1,200 to 7,500 feet) elevation. Restricted to streams in ponderosa pine, montane hardwood-conifer, and montane riparian habitats.	March through June	<b>Absent:</b> No water features within the Project site.
<i>Spea hammondi</i> <b>Western spadefoot</b>	US: PT CA: SSC	Grasslands and occasionally hardwood woodlands; largely terrestrial but requires rain pools or other ponded water persisting at least three weeks for breeding; burrows in loose soils during dry season. Occurs in the Central Valley and adjacent foothills, the non-desert areas of southern California, and Baja California.	October through April (following onset of winter rains)	<b>Absent:</b> Site is highly disturbed and within a developed area. No vernal pools occur on site for breeding and soils are too compacted for burrowing.
<i>Taricha torosa</i> <b>Coast Range newt</b>	US: – CA: SSC	Breeds in ponds, reservoirs, and slow-moving streams with long-lasting (at least through July), clean water; uses nearby upland areas including grassland, chaparral, and woodland; coastal drainages from Mendocino County south to San Diego County, with populations from San Luis Obispo County south designated as sensitive.	October through May	<b>Absent:</b> Project site does not contain water features and lacks grassland, chaparral, or woodland habitat. No coastal drainages are present.
<b>Reptiles</b>				
<i>Anniella stebbinsi</i> <b>Southern California legless lizard</b>	US: – CA: SSC	Inhabits sandy or loose loamy soils with high moisture content under sparse vegetation in Southern California.	Nearly year round, at least in southern areas	<b>Absent:</b> Project site is highly disturbed and contains inadequate soils.
<i>Arizona elegans occidentalis</i> <b>California glossy snake</b>	US: – CA: SSC	Scrub and grassland habitats, often with loose or sandy soils. Patchily distributed from the eastern portion of San Francisco Bay to southern San Joaquin Valley and in non-desert areas of southern California. Also occurs in Baja California, Mexico.	Most active March through June (nocturnal)	<b>Absent:</b> Although ruderal/non-native grasslands are present, site soil textures do not meet the requirements needed to support suitable habitat and Project site is highly disturbed.

**Table C: Special-Status Species Occurrence Probability**

Species	Status	Habitat and Distribution	Activity Period	Occurrence Probability
<i>Aspidoscelis tigris stejnegeri</i> <b>Coastal whiptail</b>	US: – CA: SSC	Woodlands, riparian areas, and sparsely vegetated areas in a wide variety of habitats including coastal sage scrub and sparse grassland. Occurs in valleys and foothills from Ventura County to Baja California.	April through August	<b>Absent:</b> Although ruderal/non-native grasslands are present, site soil textures do not meet the requirements needed to support suitable habitat.
<i>Phrynosoma blainvillii (coronatum)</i> <b>Coast horned lizard</b>	US: – CA: SSC	Primarily in sandy soil in open areas, especially washes and floodplains, in many plant communities. Requires open areas for sunning, bushes for cover, patches of loose soil for burial, and an abundant supply of ants or other insects. Occurs west of the deserts from northern Baja California north to Shasta County below 2,400 meters (8,000 feet) elevation.	April through July with reduced activity August through October	<b>Absent:</b> Project site lacks sandy soils for burrowing and scrub needed for cover. Sparse vegetation on site is not expected to contribute to the abundance of insects or ants being present.
<i>Thamnophis hammondi</i> <b>Two-striped garter snake</b>	US: – CA: SSC	Highly aquatic. Only in or near permanent sources of water. Streams with rocky beds supporting willows or other riparian vegetation. From Monterey County to northwest Baja California.	Diurnal Year-round	<b>Absent:</b> No permanent water sources occur on the Project site.
<b>Birds</b>				
<i>Agelaius tricolor (nesting colony)</i> <b>Tricolored blackbird</b>	US: – CA: ST/SSC	Open country. Forages in grassland and cropland habitats. Nests in large groups near fresh water, preferably in emergent wetland with tall, dense cattails or tules, but also in thickets of willow, blackberry, wild rose, or tall herbs. Seeks cover for roosting in emergent wetland vegetation, especially cattails and tules, and also in trees and shrubs. Occurs in western Oregon, California, and northwestern Baja California.	Year-round	<b>Absent:</b> Project site lacks suitable habitat. No grassland or cropland is present, and site lacks emergent wetlands needed for nesting.
<i>Aimophila ruficeps canescens</i> <b>Southern California rufous-crowned sparrow</b>	US: – CA: WL	Coast lowlands and foothills in sage scrub, broken or burned chaparral, and grassland with scattered shrubs. Prefers open scrubby habitat on rocky xeric slopes.	Year-Round, diurnal active	<b>Absent:</b> Project site lacks suitable habitat. No scrubby habitat on rocky xeric slopes occur on site.

**Table C: Special-Status Species Occurrence Probability**

Species	Status	Habitat and Distribution	Activity Period	Occurrence Probability
<i>Athene cunicularia</i> (burrow sites)  <b>Burrowing owl</b>	US: – CA: SSC	Open, treeless areas with low, sparse vegetation, usually on flat or gently sloping terrain, including grasslands, sparse scrub (cover less than 30 percent), farmland, airfields, airports, road embankments, cemeteries, urban vacant lots, desert areas, and other open habitat. They usually occupy ground squirrel burrows but may also utilize man-made structures such as culverts or debris piles, usually temporarily.	Year-round	<b>Low to Moderate:</b> Habitat on site has the potential to be suitable. However, species has not been seen within 10 miles of the Project site according to ebird records (2024). Site is also highly disturbed and no efficient size burrows were observed during the July field survey.
<i>Beuto swansoni</i>  <b>Swainson’s hawk</b>	US: – CA: CT	Open desert, grassland, or cropland containing scattered, large trees or small groves. Breeds in stands with few trees in juniper-sage flats, riparian areas, and in oak savannah in the Central Valley. Forages in adjacent grasslands or suitable grain or alfalfa fields, or livestock pastures. Breeds and nests in western North America; winters in South America. Uncommon breeding resident and migrant in the Central Valley, Klamath Basin, Northeastern Plateau, Lassen County, and Mojave Desert. Very limited breeding reported from Lanfair Valley, Owens Valley, Fish Lake Valley, and Antelope Valley. In Southern California, now mostly limited to spring and fall transient. Formerly abundant in California with wider breeding range.	Spring and Fall	<b>Absent:</b> Project site lacks suitable (open desert, grassland, or cropland containing scattered, large trees or small groves) habitat. Site also lacks trees in juniper-sage flats, riparian areas, or oak savannah necessary for breeding.
<i>Cypseloides niger</i>  <b>Black swift</b>	US: – CA: SSC	Most frequently seen in the air feeding on tiny airborne insects. Usually seen near cliffs in mountainous regions; occasionally coastal. Nests in crevices in deep canyon cliffs near waterfalls or in sea cliffs. In California, breeds very locally in the Sierra Nevada and Cascade Range, the San Gabriel, San Bernardino, and San Jacinto Mountains, and in coastal bluffs and mountains from San Mateo County south to probably San Luis Obispo County.	Spring through Summer	<b>Absent:</b> Project site lacks suitable habitat (cliffs in mountainous regions or coastal terrain) for nesting and foraging.

**Table C: Special-Status Species Occurrence Probability**

Species	Status	Habitat and Distribution	Activity Period	Occurrence Probability
<i>Laterallus jamaicensis coturniculus</i> <b>California black rail</b>	US: – CA: ST/CFP	Requires shallow water in salt marshes, freshwater marshes, wet meadows, or flooded grassy vegetation. Prefers areas of moist soil vegetated by fine-stemmed emergent plants, rushes, grasses, or sedges, with scattered small pools. Known from coastal California, northwestern Baja California, the lower Imperial Valley, and the lower Colorado River of Arizona and California. Now extirpated from virtually all of coastal Southern California.	Year-round	<b>Absent:</b> No water sources, fresh or saltwater marshes, wet meadows, or flooded grassy vegetation present on Project site.
<i>Polioptila californica californica</i> <b>Coastal California gnatcatcher</b>	US: FT CA: SSC	Inhabits coastal sage scrub in low-lying foothills and valleys up to about 500 meters (1,640 feet) elevation in cismontane southwestern California and Baja California.	Year-round	<b>Absent:</b> Project site lacks suitable habitat. No coastal sage scrub in low-lying foothills or valleys are present.
<b>Mammals</b>				
<i>Antrozous pallidus</i> <b>Pallid bat</b>	US: – CA: SSC	Most common in open, dry habitats with rocky areas for roosting. Day roosts in caves, crevices, rocky outcrops, tree hollows or crevices, mines and occasionally buildings, culverts, and bridges. Night roosts may be more open sites, such as porches and open buildings. Grasslands, shrublands, woodlands, and forest in western North America.	Year-round; nocturnal	<b>Low:</b> Site does not contain preferred habitat for general roosting. However, adjacent more developed lands or trees may provide space for night roosting allowing them to present within the Project site for foraging.
<i>Chaetodipus fallax fallax</i> <b>Northwestern San Diego pocket mouse</b>	US: – CA: SSC	Found in sandy herbaceous areas, usually associated with rocks or coarse gravel in coastal scrub, chaparral, grasslands, and sagebrush, from Los Angeles County through southwestern San Bernardino, western Riverside, and San Diego Counties to northern Baja California.	Year-round	<b>Low:</b> Project lacks sandy herbaceous areas. Site is highly disturbed in which vegetation varies due to the destruction or disturbance of it.
<i>Dipodomys merriami parvus</i> <b>San Bernardino kangaroo rat</b>	US: FE CA: SE/SSC	Gravelly and sandy soils of alluvial fans, braided river channels, active channels and terraces; San Bernardino Valley (San Bernardino County) and San Jacinto Valley (Riverside County). In San Bernardino County, this species occurs primarily in the Santa Ana River and its tributaries north of	Nocturnal, active year-round	<b>Low:</b> Project site lacks preferred habitat. No gravelly or sandy soils of alluvial fans, braided river channels, active channels or terraces. Site is highly disturbed in which vegetation varies due to the

**Table C: Special-Status Species Occurrence Probability**

Species	Status	Habitat and Distribution	Activity Period	Occurrence Probability
		Interstate 10, with small remnant populations in the Etiwanda alluvial fan, the northern portion of the Jurupa Mountains in the south Bloomington area, and in Reche Canyon. In Riverside County, this species occurs along the San Jacinto River east of approximately Sanderson Avenue, and along Bautista Creek. Remnant populations may also occur within Riverside County in Reche Canyon, San Timoteo Canyon, Laborde Canyon, the Jurupa Mountains, and the Santa Ana River Wash north of State Route 60.		destruction or disturbance of it as seen in ariels and during the field survey.
<i>Dipodomys stephensi</i> <b>Stephen's kangaroo rat</b>	US: FT CA: ST	Found in plant communities transitional between grassland and coastal sage scrub, with perennial vegetation cover of less than 50 percent. Most commonly associated with <i>Artemisia tridentata</i> , <i>Eriogonum fasciculatum</i> , and <i>Erodium</i> . Requires well-drained soils with compaction characteristics suitable for burrow construction (neither sandy nor too hard). Not found in soils that are highly rocky or sandy, less than 20 inches deep, or heavily alkaline or clay, or in areas exceeding 25 percent slope. Occurs only in western Riverside County, northern San Diego County, and extreme southern San Bernardino County, below 915 meters (3,000 feet) elevation. In northwestern Riverside County, known only from east of Interstate 15. Reaches its northwest limit in south Norco, southeast Riverside, and in the Reche Canyon area of Riverside and extreme southern San Bernardino Counties.	Year-round, nocturnal	<b>Absent:</b> Project site lacks suitable habitat. No grassland or coastal sage scrub communities onsite. Site is also not within the known range of this species.
<i>Eumops perotis californicus</i> <b>Western mastiff bat</b>	US: – CA: SSC	Occurs in many open, semi-arid to arid habitats, including conifer and deciduous woodlands, coastal scrub, grasslands, chaparral, etc.; roosts in crevices in vertical cliff faces, high buildings, and tunnels, and in palm fronds; travels widely when foraging.	Year-round; nocturnal	<b>Low:</b> Project site lacks favorable roosting habitat, but species may forage over the site.

**Table C: Special-Status Species Occurrence Probability**

Species	Status	Habitat and Distribution	Activity Period	Occurrence Probability
<i>Lasiurus cinereus</i> <b>Hoary bat</b>	US: CA: SA	Forages over a wide range of habitats, but prefers open habitats with access to trees for roosting, and water. Ranges throughout most of California.	Primarily the warmer months; leaves colder areas during winter	<b>Low:</b> Project site contains open habitat and trees. However, very few trees are present and only make up a small portion of the Project site. The site itself lacks favorable habitat and sources of water, but species may forage over the site.
<i>Lasiurus xanthinus</i> <b>Western yellow bat</b>	US: – CA: SSC	Found mostly in desert and desert riparian areas of the southwest US, but also expanding its range with the increased usage of native and non-native ornamental palms in landscaping. Individuals typically roost amid dead fronds of palms, but have also been documented roosting in cottonwood trees. Forage over many habitats.	Year-round; nocturnal	<b>Absent:</b> Project site is not within a desert or desert riparian area.
<i>Lepus californicus bennettii</i> <b>San Diego black-tailed jackrabbit</b>	US: – CA: SA	Variety of habitats including herbaceous and desert scrub areas, early stages of open forest and chaparral. Most common in relatively open habitats. Restricted to the cismontane areas of Southern California, extending from the coast to the Santa Monica, San Gabriel, San Bernardino, and Santa Rosa Mountain ranges.	Year-round, diurnal and crepuscular activity	<b>Low:</b> Project site is within a heavily developed area. Site is highly disturbed in which vegetation varies due to the soil compaction and disturbance.
<i>Neotoma lepida intermedia</i> <b>San Diego desert woodrat</b>	US: – CA: SSC	Found in desert scrub and coastal sage scrub habitat, especially in association with cactus patches. Builds stick nests around cacti, or on rocky crevices. Occurs along the Pacific slope from San Luis Obispo County to northwest Baja California.	Year-round, mainly nocturnal, occasionally crepuscular and diurnal	<b>Absent:</b> Project site lacks desert or coastal scrub habitat and lacks cacti and rocky crevices for nesting.
<i>Nyctinomops macrotis</i> <b>Big free-tailed bat</b>	US: – CA: SSC	Inhabits rugged, rocky canyon country in southwestern United States. Found from northern South America and the Caribbean Islands northward to the western United States. In the southwestern U.S., populations appear to be scattered.	Year-round	<b>Absent:</b> Project site lacks suitable habitat. No rugged, rocky canyon country present on site.

**Table C: Special-Status Species Occurrence Probability**

Species	Status	Habitat and Distribution	Activity Period	Occurrence Probability
<i>Ovis canadensis nelson</i> <b>Desert bighorn sheep</b>	US: – CA: FP	Occurs in open, rocky, steep areas with available water and herbaceous forage; widely distributed from the White Mountains in Mono County to the Chocolate Mountains in Imperial County.	Year-round	<b>Absent:</b> Project site lacks open, rocky, steep areas with available water and herbaceous forage.
<i>Perognathus longimembris brevinasus</i> <b>Los Angeles pocket mouse</b>	US: – CA: SSC	Prefers sandy soil for burrowing, but has been found on gravel washes and stony soils. Found in coastal sage scrub in Los Angeles, Riverside, and San Bernardino Counties.	Nocturnal. Active late spring to early fall.	<b>Absent:</b> Site lacks appropriate soils for burrowing and coastal sage scrub.

Source: Compiled by LSA (2024).

**US: Federal Classifications**

- FE Listed as Endangered.
- FT Listed as Threatened.
- FPE Proposed for listing as Endangered.
- FPT Proposed for listing as Threatened.
- FPD Proposed for delisting.
- FC Candidate for listing as Threatened or Endangered.

**CA: State Classifications**

- SE State-listed as Endangered.
- ST State-listed as Threatened.
- SR State-listed as Rare.
- SCE Candidate for State-listing as Endangered.
- SCT Candidate for State-listing as Threatened.
- SC Candidate for State-listing as Threatened or Endangered.
- SSC Species of Special Concern. Refers to animals with vulnerable or seriously declining populations.
- CFP California Fully Protected. Refers to animals protected from take under Fish and Game Code sections 3511, 4700, 5050, and 5515.
- SA Special Animal. Refers to any other animal monitored by the Natural Diversity Data Base, regardless of its legal or rarity status.
- 1A California Rare Plant Rank 1A – presumed extinct in California.
- 1B California Rare Plant Rank 1B – rare, threatened or endangered in California and elsewhere.
- 2B California Rare Plant Rank 2B – rare, threatened or endangered in California, but more common elsewhere.
- 3 California Rare Plant Rank 3 – a review list of plants about which more information is needed.
- 4 California Rare Plant Rank 4 – a watch list of plants of limited distribution.

**MSHCP: Western Riverside County MSHCP Status**

- C Species is covered and adequately conserved under the MSHCP.
  - S Species is covered and adequately conserved under the MSHCP, but surveys are required within indicated habitats and/or survey areas.
  - P Species is covered and will be adequately conserved when MSHCP specified requirements are met.
- CNDDDB = California Natural Diversity Database

## IMPACT FINDINGS

### VEGETATION AND HABITAT IMPACTS

Based on the current conditions of the Project site, construction activities would result in less than significant impacts to native habitat and would not result in any direct impacts to sensitive natural communities. According to CNDDDB, there are no recorded observations of natural communities of special concern with potential to occur within the Project site or vicinity. Additionally, no natural communities of special concern were observed during the biological survey.

### THREATENED AND ENDANGERED SPECIES

Under provisions of Section 7(a)(2) of the federal Endangered Species Act, a federal agency that permits, licenses, funds, or otherwise authorizes a project activity must consult with the USFWS to ensure that its actions would not jeopardize the continued existence of any listed threatened or endangered species or destroy or adversely modify critical habitat. The USFWS designates as threatened or endangered species that are at risk of extinction and may also adopt recovery plans that identify specific areas that are essential to the conservation of a listed species. Critical habitat areas that may require special management considerations or protections can also be designated.

CESA is administered by the CDFW and prohibits the “take” of plant and animal species identified as either threatened or endangered in the State of California by the Fish and Game Commission (Fish and Game Code Sections 2050 to 2097). “Take” is defined as to hunt, pursue, catch, capture, or kill. Sections 2091 and 2081 of CESA allow the CDFW to authorize exceptions to the prohibition of “take” of State-listed threatened or endangered plant and animal species for purposes such as public and private development. The CDFW requires formal consultation to ensure that a proposed project’s actions would not jeopardize the continued existence of any listed species or destroy or adversely affect listed species’ habitats.

As described in Table C, no regionally occurring special-status animal species are expected to be present on the Project site or to be adversely affected by the Project due to the lack of suitable habitats and the developed/disturbed conditions within the direct disturbance limits of the Project.

Additionally, as described in Table C, no federal or State-listed endangered plant species are expected to occur on the Project site due to the lack of suitable soils. Therefore, the Project would have no effects on federally listed endangered plant species.

No USFWS designated critical habitat is present on the Project site. Therefore, the Project would have no effects on designated critical habitat.

### NON-LISTED SPECIAL-STATUS SPECIES

The following non-listed special-status species as identified in Table C are not expected to occur on the Project site due to a lack of suitable habitat: Southern California legless lizard (*Anniella stebbinsi*), pallid bat (*Antrozous pallidus*), California glossy snake (*Arizona elegans occidentalis*), burrowing owl (*Athene cunicularia*), western yellow bat (*Lasiurus xanthinus*), San Diego desert

woodrat (*Neotoma lepida intermedia*), big free-tailed bat (*Nyctinomops macrotis*), and coast horned lizard (*Phrynosoma blainvillii*). These species all have a limited population distribution in Southern California. These animals have no official State or federal protection status but require consideration under CEQA.

Burrowing owls, however, have a low to moderate probability of occurrence within the Project site. Burrowing owls inhabit open country across much of North America, typically occupying ground squirrel burrows in open, dry grasslands, agricultural and range lands, and other developed/ornamental areas. They often utilize man-made structures and avoid tall, thick vegetation and brush. While the Project site does have disturbed soils and minimal vegetation cover conducive to burrowing owl usage, no burrows or signs of burrowing owls were observed during the field survey. Given the probability of occurrence is “Low to Moderate,” LSA recommends the following impact avoidance measure:

- **Preconstruction Presence/Absence Survey:** 14 days prior to the commencement of proposed project activities, a qualified biologist will conduct a Presence/Absence survey of suitable habitat on the project site as well as survey for signs of scat/ burrow usage. If burrowing owls/ active burrows are directly observed within the Project site during the preconstruction survey, a suitable buffer will be placed around the active burrow as determined by a qualified biologist and avoided until the individuals leave of their own accord. Additionally, if burrowing owl is found during the preconstruction survey, the Project proponent will need to inform the CDFW and USFWS and prepare a Burrowing Owl Protection and Relocation Plan for approval by these agencies prior to initiating ground disturbance.

## NESTING BIRDS

There are trees adjacent to or within the Project site and construction activities could result in impacts to nesting bird species. To reduce the potential impact, construction activities should try and avoid the nesting bird season (February 1 through September 15) or perform a preconstruction nesting bird survey prior to any Project activities planned during the nesting bird season to ensure compliance with the federal Migratory Bird Treaty Act and California Fish and Game Code Sections 3500–3516. Implementation of the following measures will reduce potential impacts to nesting raptors, migratory birds, and special status birds to a less than significant level under CEQA and will ensure compliance with State and federal laws protecting these avian species.

- **Construction Activity:** The Project’s construction activities will occur, if feasible, between September 16 and January 31 (outside of nesting bird season) in an effort to avoid impacts to nesting birds. If activities must occur within nesting bird season (February 1 to September 15), a qualified biologist will conduct a pre-construction survey no more than 3 days (72 hours) prior to any construction activities and vegetation removal. Should nesting birds be found, an exclusionary buffer will be established by the qualified biologist. The buffer will be clearly marked in the field by construction personnel under guidance of the qualified biologist. No construction activities will be allowed within this zone until the qualified biologist determines that the young have fledged, or the nest is no longer active.

- **Tree Trimming and Removal:** To the greatest extent feasible, tree trimming/removal activities will be performed outside of the nesting season for birds (February 1–September 15). If trimming or removal of trees during the nesting bird season cannot be avoided, a qualified biologist will monitor tree trimming and removal activities, if nest are found present during the pre-construction survey.

## WILDLIFE MOVEMENT, CORRIDORS, AND NURSERY SITES

Wildlife movement includes seasonal migration along corridors as well as daily movements for foraging. Migration corridors may include areas of unobstructed movement of deer, riparian corridors providing cover for migrating birds, routes between breeding waters and upland habitat for amphibians, and areas between roosting and feeding areas for birds.

Wildlife species that occur in the Project vicinity are adapted to the urban-wildland interface and the study area is primarily developed as existing roadway infrastructure and residential development that already restrict wildlife movement. Although there is an undeveloped lot adjacent to the eastern boundary of the Project site, areas south, west, and north are fully developed and provide little to no value to wildlife movement. Because the Project site is surrounded by development and a brick wall, the Project's activities would not place any permanent barriers within any known wildlife movement corridors or interfere with habitat connectivity and therefore would not substantially limit wildlife movement more than current wildlife movement limitations. The Project site does not correspond to any landscape blocks or essential connectivity areas, as documented in the California Essential Habitat Connectivity Project report (Beier et al. 2011).

## LOCAL TREE ORDINANCE

Removal of any City tree by anyone other than the City of Upland must comply by the City of Upland's local tree ordinance (12.24.100) (City of Upland Code of Ordinances 2024). Trees were observed within or adjacent to the Project site. However, the Project does not intend to disturb or remove them. Should any potential disturbance or removal of these trees become necessary, the regulations outlined in the City of Upland's Tree Ordinance would need to be followed.

## REFERENCES

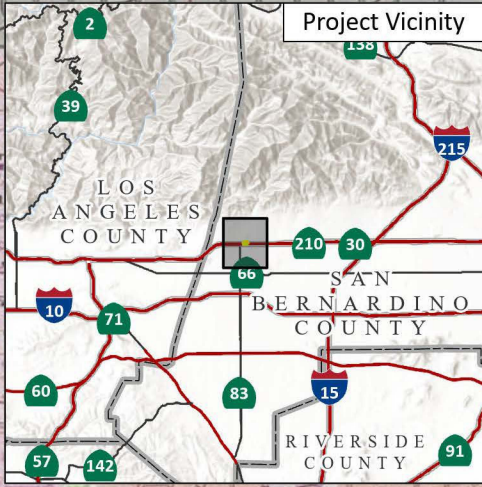
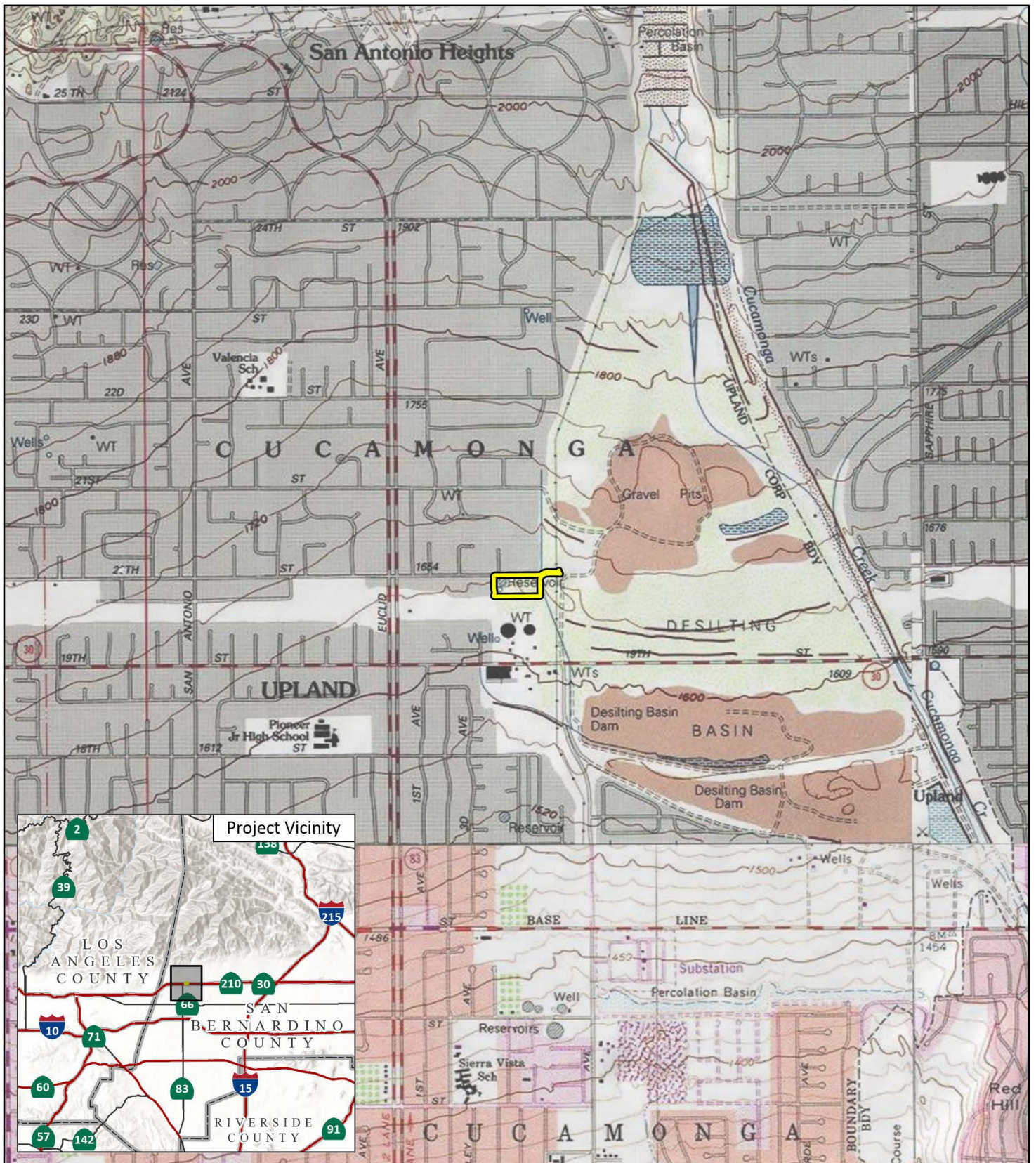
- Beier P., Wayne S., Baldwin R., and McRae B.. (2011). Toward Best Practices for Developing Regional Connectivity Maps. *Conservation biology: the journal of the Society for Conservation Biology*. 25. 879-92. 10.1111/j.1523-1739.2011.01716.x.
- California Department of Fish and Wildlife (CDFW). 2024. California Natural Diversity Database (CNDDDB). RareFind 5 (version 5.3.0). Website: <https://wildlife.ca.gov/Data/CNDDDB> (accessed July 2024).
- California Native Plant Society (CNPS). 2024. Rare Plant Program, Rare Plant Inventory (v9.5). Website: <https://www.rareplants.cnps.org> (accessed July 2024).
- City of Upland Code of Ordinances, Title 12 Streets, Sidewalks, and Public Places, Chapter 12.24 Parkways, Parking Strips, 12.24.070 Planting details. 2024. Website: City of Upland, CA PARKWAYS, PARKING STRIPS (ecode360.com) (accessed August 2024)
- Google Earth Pro. 2024. Aerial photographs of the Project site and surrounding areas (accessed July 2024).
- Natural Resources Conservation Service (NRCS). 2024. WebSoil Survey (Version 3.4.0). United States Department of Agriculture (USDA). Website: <https://websoilsurvey.sc.egov.usda.gov/> (accessed July, 2024).
- United States Fish and Wildlife Service (USFWS). 2024a. Environmental Conservation Online System (ECOS). Information for Planning and Consultation (IPaC) Trust Resources Report. Website: <http://ecos.fws.gov/ecp/> (accessed July 2024).
- \_\_\_\_\_. 2024b. National Wetland Inventory. Website: <https://www.fws.gov/program/national-wetlands-inventory/wetlands-mapper> (accessed July 2024).
- \_\_\_\_\_. 2024c. USFWS Threatened & Endangered Species Active Critical Habitat Report. Website: <http://ecos.fws.gov/crithab/> (accessed July 2024).
- \_\_\_\_\_. 2024d. USFWS Critical Habitat Mapper. February 8. Website: <http://ecos.fws.gov/crithab/> (accessed July 2024).
- United States Department of Agriculture (USDA). 2024. Natural Resource Conservation Service (NRCS). Website: <https://websoilsurvey.nrcs.usda.gov/app/WebSoilSurvey.aspx> (accessed July, 2024)
- United States Geological Survey (USGS). 1967. *Mt. Baldy, Cucamonga Peak, Guasti, and Ontario, California* topographic quadrangle maps.

---

## APPENDIX A

### FIGURES 1–5

- Figure 1: Project Location and Vicinity
- Figure 2: Conceptual Site Plan
- Figure 3: Soils
- Figure 4: Vegetation, Land Cover, and Photo Points
- Figure 5: Representative Site Photographs



 Project Location

FIGURE 1

LSA



0 1000 2000  
FEET

SOURCE: Mt. Baldy CA, 7.5' Quad (USGS 1988)

I:\2024\20241723\GIS\Pro\San Antonio Water Company Headquarters\San Antonio Water Company Headquarters.aprx (8/21/2024)

San Antonio Water Company Headquarters  
Project Location and Vicinity



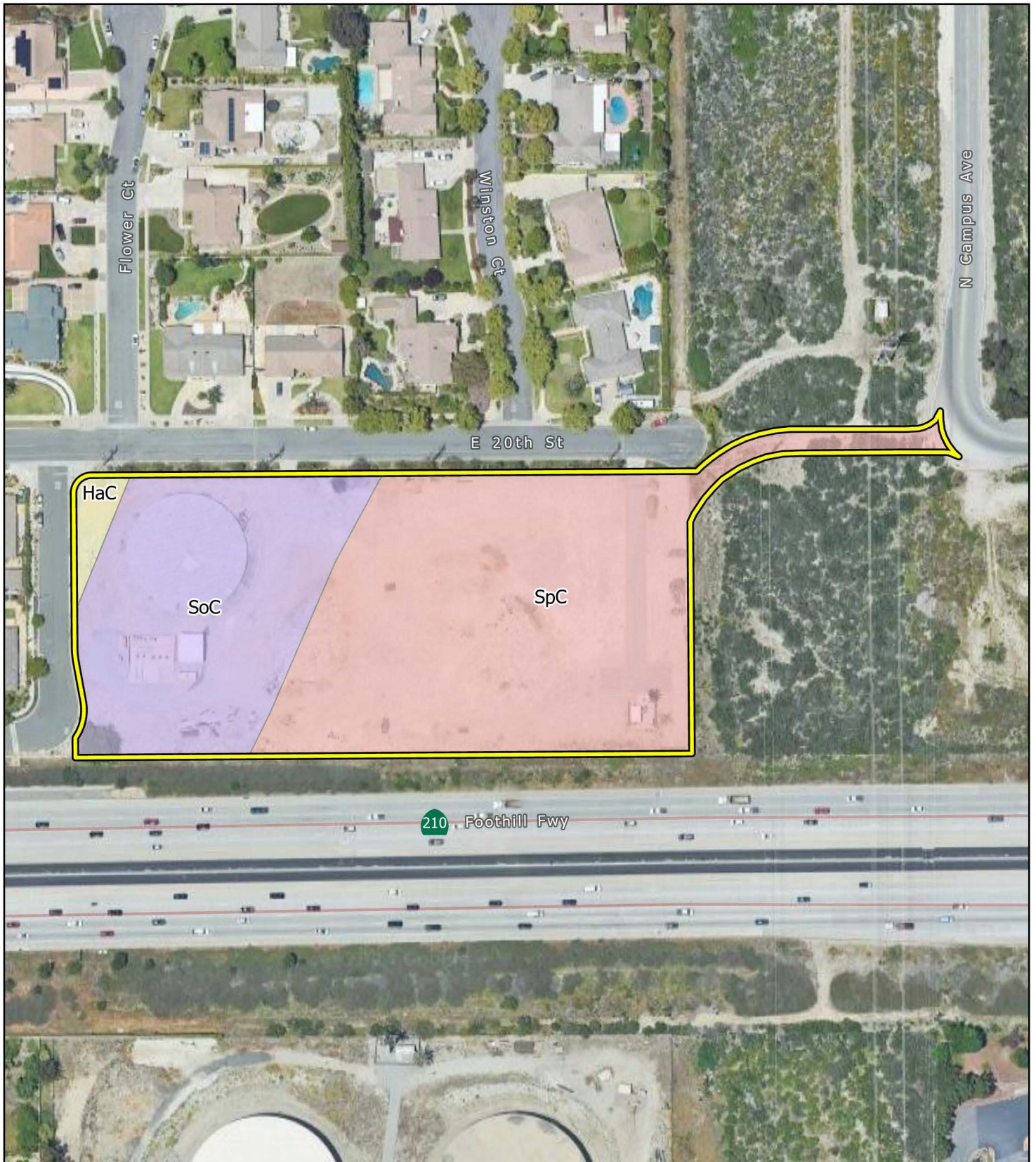



FIGURE 3


LSA

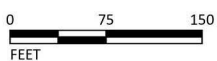
 Project Location

Soils

 HaC - Hanford coarse sandy loam, 2 to 9 percent slopes

 SoC - Soboba gravelly loamy sand, 0 to 9 percent slopes

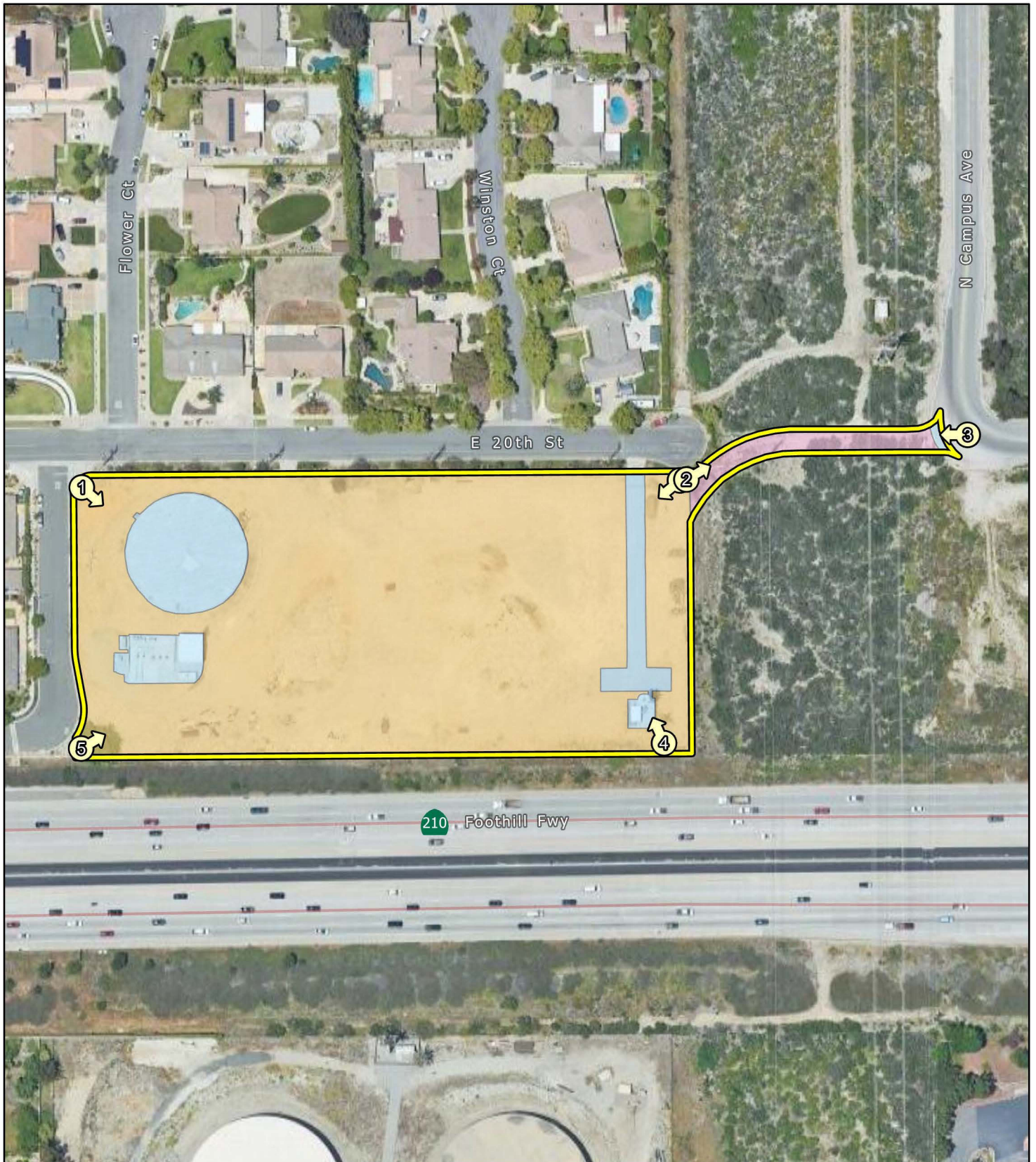
 SpC - Soboba stony loamy sand, 2 to 9 percent slopes



SOURCE: Google Maps (2023)

I:\2024\20241723\GIS\Pro\San Antonio Water Company Headquarters\San Antonio Water Company Headquarters.aprx (8/21/2024)

San Antonio Water Company Headquarters  
Soils



LSA





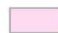
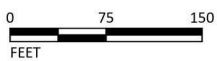
- |  |   |
|--|---|
|  Project Location |  Developed         |
|  Photo Point      |  Disturbed         |
|  |  Scale Broom Scrub |

FIGURE 4



SOURCE: Google Maps (2023)

*San Antonio Water Company Headquarters  
Vegetation, Land Cover, and Photo Points*



**Photograph 1:** View looking southeast along western boundary of Project site.



**Photograph 2:** View looking west along eastern boundary of Project site.



**Photograph 2.1:** View looking northeast where Project road will exist.



**Photograph 3:** View looking west at scale broom scrub and where Project road will exist.



**Photograph 4:** View looking north along eastern boundary of Project site.



**Photograph 5:** View looking east along western boundary of Project site.

## APPENDIX B

### VASCULAR PLANT SPECIES OBSERVED

LSA biologist Chrissy Kent observed the following vascular plant species on the Project site.

EUDICOT FLOWERING PLANTS	
<b>Asteraceae</b>	<b>Sunflower family</b>
<i>Erigeron bonariensis</i> *	Flax-leaved horseweed
<i>Lepidospartum squamatum</i>	Scalebroom
<b>Chenopodiaceae</b>	<b>Salt family</b>
<i>Chenopodium</i> sp.*	Clammy goosefoot
<b>Crassulaceae</b>	<b>Stonecrop family</b>
<i>Crassula connata</i>	Sand pygmyweed
<b>Geraniaceae</b>	<b>Geranium family</b>
<i>Erodium cicutarium</i> *	Redstem stork's bill
<b>Portulacaceae</b>	<b>Purslane family</b>
<i>Portulaca oleracea</i> *	Common purslane
<b>Zygophyllaceae</b>	<b>Gallweed family</b>
<i>Tribulus terrestris</i> *	Puncture vine
MONOCOT FLOWERING PLANTS	
<b>Poaceae</b>	<b>Grass family</b>
<i>Bromus rubens</i> *	Red brome
<i>Schismus barbatus</i> *	Common Mediterranean grass

\* Introduced species not native to California

Taxonomy and scientific nomenclature generally conform to Baldwin, B.G., D.H. Goldman et al., eds. (2012; The Jepson Manual: Vascular Plants of California, 2<sup>nd</sup> edition; University of California Press, Berkeley and Los Angeles, California).

Common names for each taxa generally conform to Roberts, F.M., Jr. (2008; The Vascular Plants of Orange County, California: An Annotated Checklist; F.M. Roberts Publications, San Luis Rey, California) except where Abrams, L. (1923, 1944, and 1951; Illustrated Flora of the Pacific States: Washington, Oregon, and California, vols. I–III; Stanford University Press, Stanford, California) and Abrams, L. and Ferris, R.S. (1960; Illustrated Flora of the Pacific States: Washington, Oregon, and California, vol. IV; Stanford University Press, Stanford, California) were used, particularly when species-specific common names were not identified in Roberts, F.M., Jr. (2008).